

6

5

4

3

2

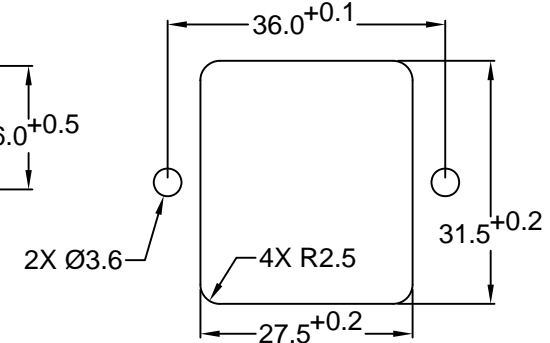
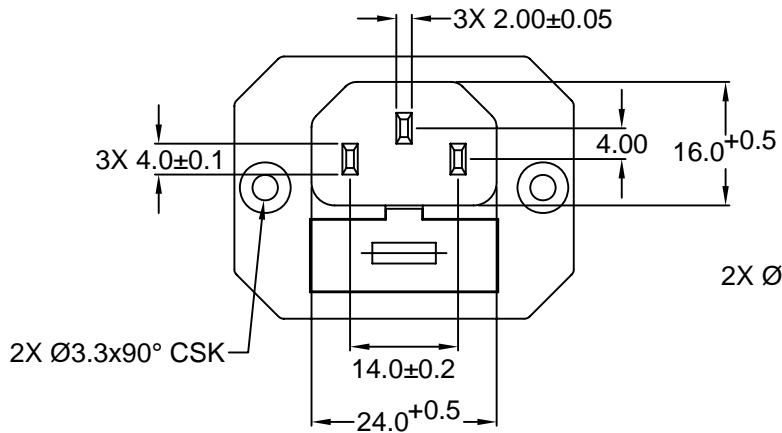
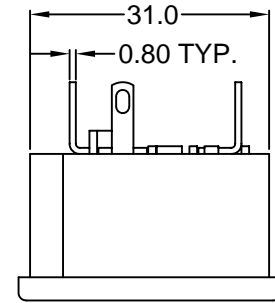
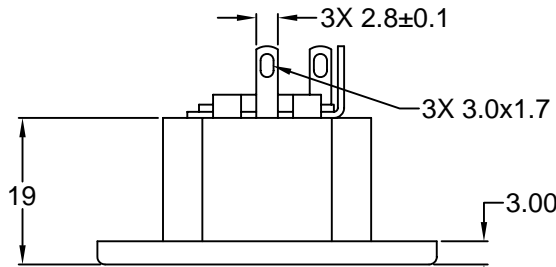
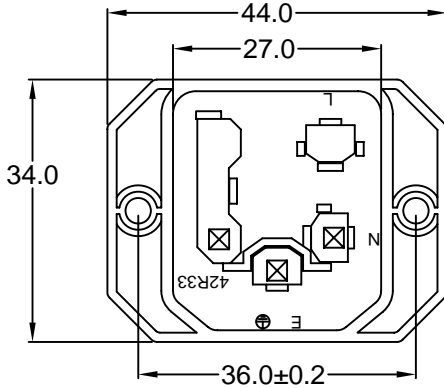
1

**MATERIAL AND FINISH:**

Insulator: Polycarbonate, UL-94V-0 rated  
Contacts: Brass, Nickel plated

**ELECTRICAL SPECIFICATIONS:**

Current rating: 10 A  
Voltage rating: 250 VAC  
Insulation resistance: 100 Mohm min. at 500 VDC  
Dielectric withstanding voltage: 2000 VAC for one minute



**RECOMMENDED  
PANEL CUTOUT**

**ORDERING CODE:**

42R33-1    2     
          1   2

**1) COLOR**

- 1 = BLACK
- 2 = GRAY

**2) ELECTRICAL CIRCUIT CONFIGURATION**

1 = 10A 250V 70°C  
2+GROUND

2 = 10A 250V 120°C  
2+GROUND

4 = 10A 250V 70°C  
2 POLE

REVISIONS

| REV | DATE | CHANGE | CHK | CHK | APPR |
|-----|------|--------|-----|-----|------|
|     |      |        |     |     |      |

**RoHS  
COMPLIANT**

| TOLERANCE<br>UNLESS OTHERWISE SPECIFIED |        |
|---|--------|
| X                                       | ± 1    |
| X.X                                     | ± 0.4  |
| X.XX                                    | ± 0.20 |

|          |    |       |          |
|----------|----|-------|----------|
| DRAWN BY | GQ | DATE: | 09/12/01 |
| CHECK BY | TD | DATE: | 09/12/01 |
| APPR BY  | PB | DATE: | 09/12/01 |

**Power Dynamics, Inc.**  
Phone: 973 560-0019 Whippany, New Jersey Fax: 973 560-0076

PART: IEC 60320 SINGLE FUSE HOLDER APPL. IN-LET; SOLDER TERMINALS; SIDE FLANGE

**42R33-1X2X**

|            |  |      |
|------------|--|------|
| SIZE: A    | ALL DIMENSIONS FOR REFERENCE ONLY<br>DIMENSIONS ARE IN MILLIMETERS | REV: |
| SCALE: NTS |  |      |

SHEET 1 of 1